



KEY DATES:

**MARCH 27TH-
APRIL 24TH**

AASA Testing

APRIL 4TH

Last day of

Re-Enrollment

Coffee with the Counselors

Spirit Day with \$1.00

APRIL 18TH-21ST

NO SCHOOL - Family Days

APRIL 23RD

Spring Concert for

K-2nd Grade

A message from Headmaster Cruz...

Testing has kicked off in full force and we are excited to see the progress of our 3rd through 6th graders. As mentioned, our theme is, "this test will be a SLAM DUNK". They are excited about all of the incentives and engagement around it and are taking it seriously while having fun. Continue to review the schedule so that your children are well rested, well fed and present for their full testing dates and times. Thank you for encouraging them alongside us.

We have begun reviewing survey data and are excited to share some preliminary results. As we move through preparation for the year ahead, we will continue to share out more. Please see the attached document in this newsletter with some survey highlights.

Lastly, as we reflect on our Spring Fiesta, we once again want to thank you for coming and our PSO for leading this. We have over 1,500 attendees. This is one of our most profitable events. As we reflected on the event we continue to realize what a huge undertaking this is. It takes months of preparation and lots of time. The end result is so great though and we want to continue this tradition regardless. The main role of our PSO is to help with teacher appreciation and what better way to fundraise for teacher needs than to host community engagement events where we can gather in fun and celebration. We look forward to continue growing our Parent Service Organization, both in understanding of how much your support and engagement provides to our teachers and also growth in numbers of parents volunteering and serving as leaders on this team!

Thank you for all you do to be a part of this Maryvale Prep family!



www.maryvaleprep.org

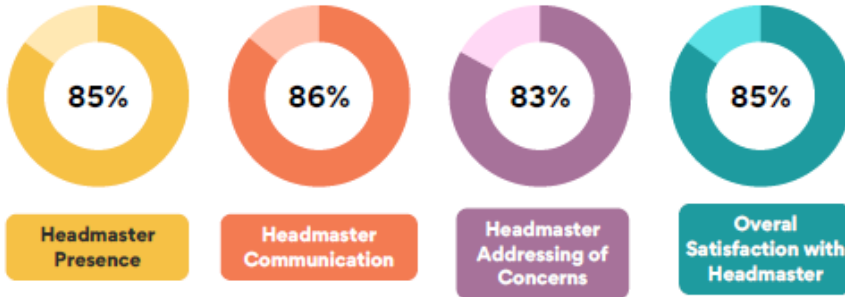


ARCHWAY MARYVALE

2024-25 PARENT SURVEY RESULTS

78% of Archway families completed this satisfaction survey at the end of Quarter 3. A net promoter score (NPS) is taken from this data. The average NPS for all Archway academies in Great Hearts was 54%. **Maryvale received a 74% NPS rating.** This indicates that 74% of those who took this survey would recommend Maryvale Prep to someone else!

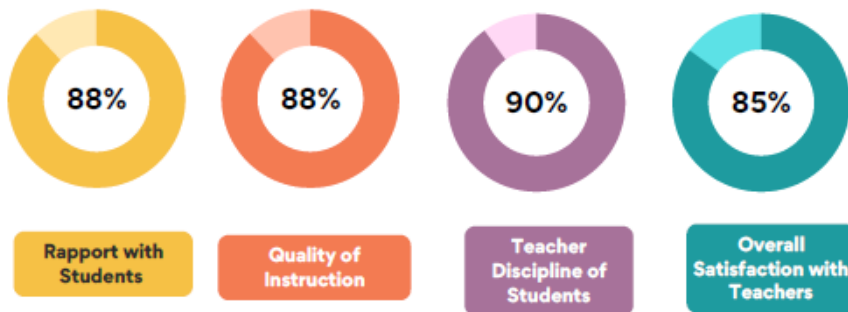
Leadership Satisfaction



Did you know?

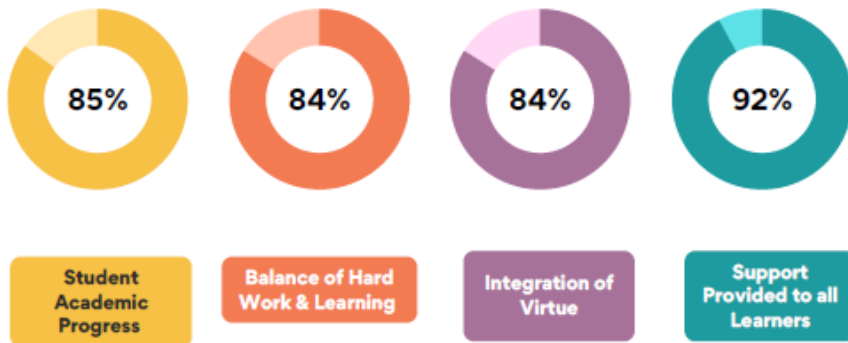
Each teacher is assigned a coach from the academic leadership team and in the first three quarters, close to 500 teacher observations and coaching sessions had taken place. Engagement between school leaders and teachers is high and we look at these satisfaction rates as we consider how much we are pushing in. This presence in the classroom and amongst teachers and students is prioritized amongst the Headmaster and Leadership Team.

Teacher Satisfaction



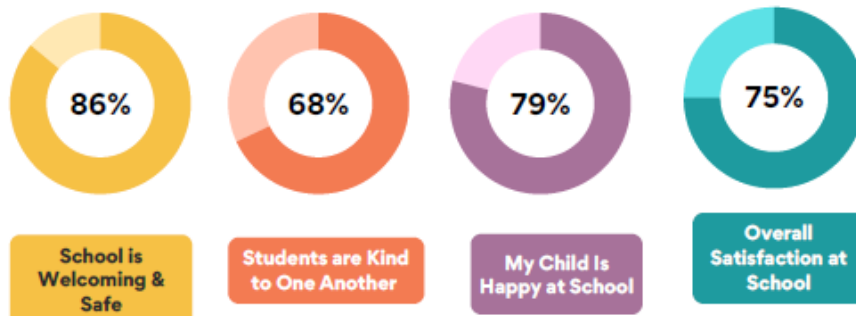
Overall 87% of families reported satisfaction with our academic program. 83% felt the classwork assigned was appropriately challenging and 78% felt homework was just right. While our program is rigorous, we provide many supports and interventions to target each learner where they are. In many grades, we sort groups across classes by skill at various parts of the day. Based on your feedback, we are making adjustments for next year to breakdown student groupings even more to give more attention to those who are at or above grade level as well. We progress monitor students frequently and use the data to make adjustments.

Academics



Our lowest scores and most of your feedback centered around our School Climate, with 75% satisfied overall, we believe this is the area where parents and families can pour in most to help us. While we have many systems in place for campus safety and engage deeply in our approach to moral formation, we would like to see improvement here. Our school leaders and support staff spend much of their time addressing concerns that stem from outside of school, particularly from social media and video game connections between students.

School Climate



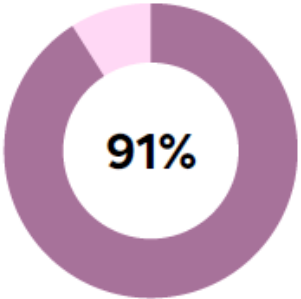
In a world where information is so easily shared, it can be challenging to help students discern between what is helpful and what is harmful. Conversations about race, gossip, and other sensitive topics are often influenced by these external forces, yet we have the opportunity to foster an environment where students can learn to engage with one another in a meaningful way - one that is based on respect and empathy rather than division. We need your help and support to make our school climate better! Starting by connecting with your child on what screens are exposing them to and communicating with us will be a good starting place.

2024-25 PARENT SURVEY RESULTS

Parent-Academy Relationship

Across the board, 91% of families were please with academy communications, front office support, and access to student records and grades. This was a 5% increase from last year.

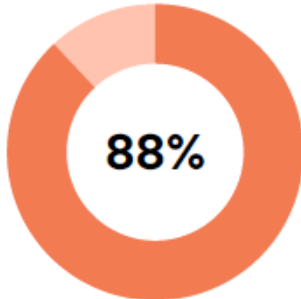
Continue to access our weekly newsletters (sent every Thursday), engage with us on social media, and utilize the parent portal to access grade reports every Monday for 3rd-6th grades.



Exceptional Student Services

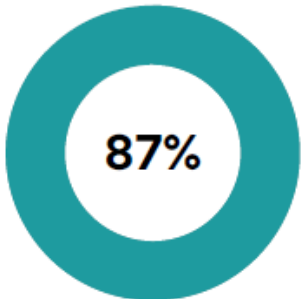
We have a high number of students who are receiving exceptional student services and continue to grow. If your child is on an IEP we urge you to communicate consistently with their ESS Coordinator if you are not completely satisfied. It is important to know their general education classroom goals as well as their IEP goals.

Overall, 88% of you are satisfied with the services our ESS team provides to your child!



English Language Learner Services

We are so thankful that the majority of you are satisfied with the services of our ELL students. Please be on the lookout for another invitation to an ELL breakfast to close out the year. We hope that the resources provided to you and the instruction in class continues to meet their needs and provide them with greater language acquisition skills.



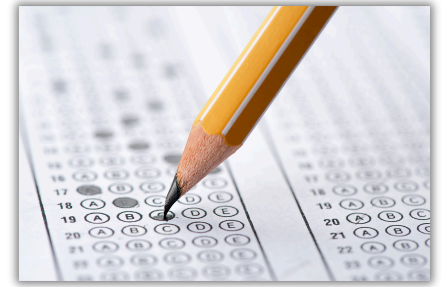
91% of families who took this survey indicated that they intend to return to Maryvale Prep next school year. We are thankful for your participation in this survey and want to continue to improve in all areas to best meet the needs of your students. Feel free to share feedback with us across the year so that we can continue to pursue excellence.

Thank You!

TEST SCHEDULE AND RESOURCES FOR 3-6 FAMILIES

What will be expected of my student during testing?

- Your student will take a series of tests during the end of March into the month of April:
 - Writing Test
 - ELA Test (2 parts)
 - Math Test (2 parts)
 - Science Test (5th grade only)
 - Reading Fluency Test (3rd grade only)



How can I help my student prepare for these tests?

- Students can prepare at home using test prep features on MobyMax or IXL.
 - MobyMax (3rd-4th):** Log in and click on the icon that says “Test Prep and Review.”
 - IXL (5th-6th):** Log in and click Learning, then click Skill Plans. Choose skills for your grade level under the Arizona Assessments icon.
- Students can walk through sample tests and practice test features using the Student Readiness Tool by clicking on the “Mic Check and Sample Tests” link at az.testnav.com.
 - Here is a direct [link](#) to the student readiness video walkthrough.
- Save the dates for when your student will be testing and make sure they get a good night’s sleep (start getting used to the recommended bedtimes below early on), get a good breakfast and maintain proper nutrition (see this [link](#) for best brain foods), and are on time and ready to go (review some of these [fun things](#) you can incorporate at home or on the way to school before and after tests to ease anxiety and have them ready)!
- Have conversations about the importance of doing your best!

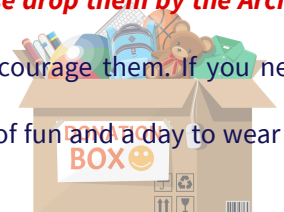
GreatHearts® How much sleep does your child need?							
Wake-Up Time:							
Age	6:00am	6:15am	6:30am	6:45am	7:00am	7:15am	7:30am
Bedtime:							
3*	6:30pm	6:45pm	7:00pm	7:15pm	7:30pm	7:45pm	8:00pm
4*	7:00pm	7:15pm	7:30pm	7:45pm	8:00pm	8:15pm	8:30pm
5	6:45pm	7:00pm	7:15pm	7:30pm	7:45pm	8:00pm	8:15pm
6	7:00pm	7:00pm	7:15pm	7:30pm	7:45pm	8:00pm	8:30pm
7	7:15pm	7:30pm	7:45pm	8:00pm	8:15pm	8:30pm	8:45pm
8	7:30pm	7:45pm	8:00pm	8:15pm	8:30pm	8:45pm	9:00pm
9	7:45pm	8:00pm	8:15pm	8:30pm	8:45pm	9:00pm	9:15pm
10	8:00pm	8:15pm	8:30pm	8:45pm	9:00pm	9:15pm	9:30pm
11	8:15pm	8:30pm	8:45pm	9:00pm	9:15pm	9:30pm	9:45pm
12	8:30pm	8:45pm	9:00pm	9:15pm	9:30pm	9:45pm	10:00pm

* Plus a bedtime gap between 1 and 3 hours

March/April							AASA: AM: 8:15-10:15 PM: After Lunch
							2025
Sunday	Monday	Tuesday	Wednesday	Thursday	Friday	Saturday	
March 23	24	25	26	March 27	March 28	29	
				5 th Grade AzSci AM: Part 1 PM: Part 2	5 th Grade AzSci AM: Part 3		
March 30	March 31	April 1	2	3	4	5	
	AM: 3 rd Grade Writing PM: AzSci Make-Ups	AM: 4 th Grade Writing PM: 3A ORF	AM: 5 th Grade Writing	AM: 6 th Grade Writing PM: 3B ORF	AM: 3 rd ELA Pt 1 PM: 3C ORF		
April 6	7	8	9	10	11	12	
	AM: 4 th ELA Pt 1 PM: 3D ORF	AM: 5 th ELA Pt 1 PM: Writing Make-Ups ORF Make-Ups	AM: 6 th ELA Pt 1	AM: 3 rd ELA Pt 2 PM: 5 th ELA Pt 2	AM: 4 th ELA Pt 2 PM: 6 th ELA Pt 2		
13	14	15	16	17	18	19	
	AM: 5 th Math Pt 1 PM: ELA Make-Ups	AM: 4 th Math Pt 1 PM: 3 rd Math Pt 1	AM: 6 th Math Pt 1	AM: 3 rd Math Pt 2 PM: 4 th Math Pt 2	No School		
20	21	22	23	24	25	26	
	No School	AM: 5 th Math Pt 2 PM: 6 th Math Pt 2	AM: AASA Make-Ups	AM: AASA Make-Ups	Slam Dunk Celebration!		

How will we motivate students at school?

- We love a good theme and this year our theme is: This test will be a slam dunk!
 - We will be doing fun things ahead of the tests like pep rallies where we hope to bring the excitement, ensuring they feel confident and ready to persevere (like Michael Jordan)
 - We will be giving Mamba Mentality (Kobe Bryant reference) raffle tickets during testing as we see students taking it seriously, showing their work, focusing and not distracting others, taking their time, etc. Students can turn their earned tickets in at the end of testing to win cool raffle prizes (on theme of course).
- We are taking any donations that would motivate our students and celebrate them. If you would like to donate things such as basketballs, cool sneakers, basketball jerseys, Gatorades, basketball draw string bags, etc. please drop them by the Archway Office.**
 - Thank you to those of you who wrote letters to your child at Family Partnership Night to encourage them. If you need a template to do so, please reach out to your child’s teacher.
 - We will end the testing window with an on theme party complete with Dunkin’ Donuts and lots of fun and a day to wear their favorite basketball jersey’s or team shirts and sneakers!



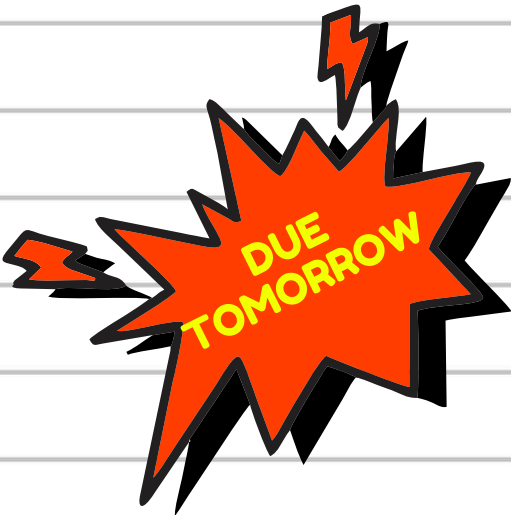
RE-ENROLL FOR THE 25-26 SY

Required for ALL students currently enrolled



ALL Maryvale Prep families **NEED** to complete the Annual Re-Enrollment for every student. If your child is not returning next school year, please complete to inform us of the intent of withdrawing at the end of the school year.

This is the time to review and update parents/guardian contact information and provide a new proof of address, review academy policies in the family handbook.



GreatHearts® | Athenaeum

CLASSICAL EDUCATION, REVOLUTIONARY SCHOOLS.™ AFTER-SCHOOL PROGRAM

Athenaeum After-School Program is focused on the liberal arts and promotes learning by providing students a diverse array of culturally enriching, academically oriented activities beyond the classroom.

Athenaeum Pricing 2025-26 Athenaeum is available for grades K-5	
Option	Price Per Child
A 5 days per week until 6:00 pm	\$175/month
B 5 days per week until 5:00 pm	\$150/month
C 3 days per week until 6:00 pm	\$125/month

Sibling Discount: 20% off each additional child registered.

Now accepting scholars up to 14 years of age

**More information available on the academy website:
Academy Life -> After-School Athenaeum**

Billing/Enrollment Questions	Wendy Hood	Programs@GreatHearts.org	602-396-7574
Program-Specific Questions	Anna Harden	Programs.Maryvale@GreatHearts.org	480-247-1532
Executive Director	Keri Campbell	Keri.Campbell@GreatHearts.org	623-606-1189

POWERSCHOOL PUBLIC PORTAL FOR EVALUATIONS

Quarter 3 Grades are available on the PowerSchool Portal.

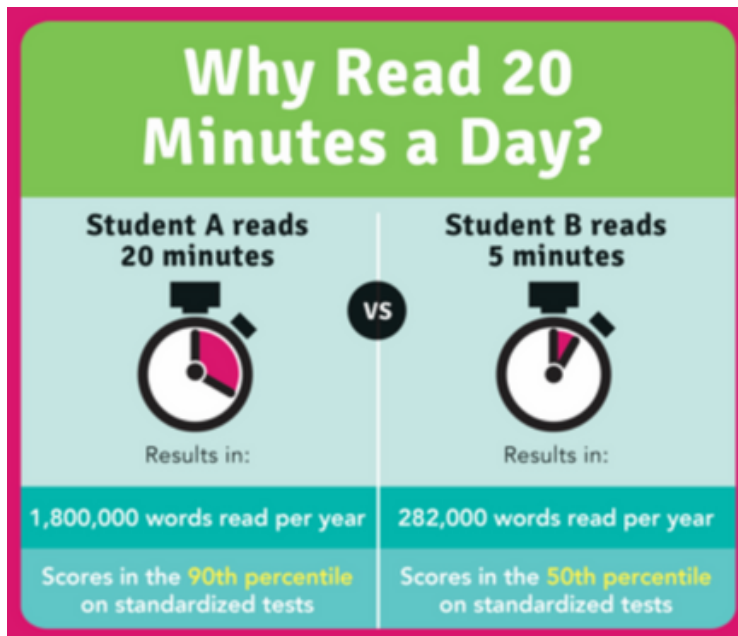
Parents, please check your email for a communication with step by step instructions on a one time set up with an access code for each student. Each student has a unique access code to retrieve their grades. Email Mrs. Castro at lcastro@maryvaleprep.org if you did not received an email.

The portal to review progress can be accessed at: <https://greateartsaz.powerschool.com/public/home.html>.



THEMATIC GOAL UPDATE: TURNING PAGES TOGETHER

We cannot continue to stress the importance of reading. Will your child score in the 90th percentile or the 50th? In what ways are you setting them up for success at home and adding to their success during the school day?



AFTER SCHOOL CLUBS:

The last week of after school extracurricular clubs for the Spring Season is the week of **April 21st**.

Students will be release as normally through carline or walker gate.

SPRING CONCERT

Our K-2 Students will grace us with their sweet voices on **Wednesday, April 23rd**.

Times:

- **Kinder:** Concert at 1:45 pm (parents arrive at 1:30 for seating. Teachers will take students there)
- **1st Grade:** 2:25 pm (Students arrive at 2:10 pm)
- **2nd Grade:** 3:10 pm (students arrive at 2:55 pm)

Logistics:

- Students will wear uniforms.
- Parents enter through Event Gates 6 & 7 and exit Gate 15 (near playground)
- Please do not arrive before student arrival times to accommodate parking for all

LANGUAGE AND ETIQUETTE

Unfortunately we are seeing an uptick in foul language and racial slurs being used and this week specifically it was found written on computers. We are able to track when students say these things to one another and are able to guide, but it is harder to point to who is doing this when we find it written in bathrooms, on walls, and on school property. While it is likely a few students doing this, it impacts the whole campus and is far out of line with our desire to push towards virtue.

Please talk to your children about the importance of respectful language and care for school property. Note as well that all consequences for this type of infraction are serious.

BARD COMPETITION

Maryvale Prep congratulates Dariana Lopez Arredondo (4B) as the winner of our 3rd Annual Bard Competition! Dariana will recite her winning poem, Nobility by Alice Cary, in the Great Hearts Final Round which takes place on **Friday, April 11th at 6:30** in the Marley Center.

We are so proud of Dariana and her hard work and can't wait to cheer her on in the Final Round!

MINI MATADORS

The last day of Mini Matadors will be **April 16th**.

Please make arrangements beyond then to plan for on time pick up each Wednesday.



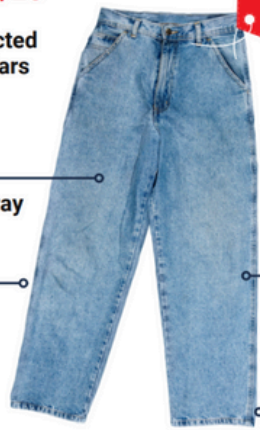
PSO PRESENTS SPIRIT WEAR FRIDAY!
04/04/25

\$7

SPIRIT WEAR FRIDAY

\$ will be collected by your scholars teacher

For Archway & Prep



No ripped jeans

No Crocs or opened-toed shoes

ALL FUNDS WILL BE FOR THE 24-25 SCHOOL YEAR!

Spirit Wear sold by Coach G



JOIN US FOR

Coffee with the Counselor

**FRIDAY, APRIL 4 AT 8:00 A.M.
IN THE ARCHWAY MPR**

We are thrilled to have **Friendly House** as our special guest speaker. Do not miss this opportunity to connect, share ideas, and enjoy some great conversations over coffee and donuts. See you there!

Please park and check in at either office (Archway or Prep).



COMING-UP FIELD TRIPS

DATE	GRADE	DESTINATION
Apr 4th	2nd	Pioneer Living History Museum
Apr 4th	Kinder	Tolmachoff Farms
Apr 15th	5th-6th	Marley Center-On Campus

Field trips have a fee to help cover transportation and venue fees. Payment and electronic permission slip must be completed by parent/guardian in **Configio**. Payment can be processed two weeks ahead, the notify me feature can send you a reminder. Please make sure you select the correct participant for the field trip and their grade.

If selected as a field trip chaperone, you need to have clearance through Raptor before the field trip. Raptor clearance must be renewed annually, if you were cleared last year, you must complete the clearance process again for the 2024-25 school year. The cost is \$6 and it only takes a few minutes. [Click here to start the process](#)

ADDITIONAL FIELD TRIP FOR 5TH AND 6TH GRADE

Our 5th and 6th grade students have an exciting opportunity to see the performance **THE SECRET GARDEN** in our own Marley Center of the Performing Arts by Southwest Shakespeare Company on **Tuesday, April 15th**.

This on campus performance is considered a field trip which requires parent permission and a payment of \$10.00 to help cover the performance fee. Please complete the permission slip and make payment on [Configio](#) by Monday, April 14th.



"One of the new things people began to find out in the last century was that thoughts—just mere thoughts—are as powerful as electric batteries—as good for one as sunlight is, or as bad for one as poison."

The Secret Garden



GREAT HEARTS DAY WITH THE DBACKS

Join us for another Great Hearts Day at Chase Field, **Friday, April 25** as the D-backs take on the Braves!

Enjoy discounted tickets for Country Night which includes a free postgame fireworks show and a free postgame concert, plus the opportunity to win game day experiences and prizes exclusive to Great Hearts families and friends. We hope to see you at the ballpark!

JOIN US FOR

GREAT HEARTS DAY

Dbacks v. Braves
Friday, April 25
SCAN FOR TICKETS

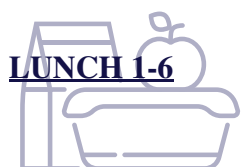
APRIL MEAL MENUS

BREAKFAST

LUNCH K

LUNCH 1-6

Online Menus



PSO PRESENTS

FEATURING: DJ HERCULES

NEON DANCE

\$12 **25** **5th-8th**
 6-9 PM APR SPORTS FIELD

Purchase tickets on Configio. Prices increase at the door. *Student ID required

Students must be picked up by 9:15pm or late charges will apply.

CONFIGIO
 NOW OPEN

PSO

SPORTS PHYSICAL DAY

All student athletes', middle school (5th-8th grade) to high school (9th-12th) who plan to participate in sports for the 25-26 school year must have a new sports physical.

Complete your pre-participation sports physical early!
Saturday, April 26th 8am-12pm in the GYM

A parent or guardian must be present during the physical until completed and signed if the athlete is under the age of 18.

Reserve a separate designated time slot for each student athlete (even if the appointment times are the same).

Signup Genius

For all athletics news and events, check out the Athletics **Spring Newsletter** and **website**.



SPORTS PHYSICAL DAY

OA
OrthoArizona

- ✓ All MS & HS Athletes
- ✓ \$10 per Physical

Register on Signup Genius

Saturday, April 26
 8:00am-12:00pm
 Maryval Prep Gym

SUMMER SCHOOL-SAVE THE DATE

We are excited to announce that we will be once again offering an outstanding Archway Summer School program for your children this summer at Maryvale Prep. The Archway program will focus on developing knowledge and skills in the core subjects of reading and mathematics.

Enrollment will open on Configio for all families on Monday, April 7th and the tuition for the Archway program is \$275, due at registration. Our classes will have a capacity of 20 students and will be filled on a first-come, first-served basis. We will be recommending students based on data and student need but all are welcome to sign up.

Summer School will run from Monday, June 2nd – Thursday June 26th. There is no school on Fridays during the summer school program, and no school on Thursday, June 19th, in observance of the Juneteenth holiday. Classes will run from 8:00-11:30 am. Students can arrive at 7:30 a.m. for breakfast and stay until 12:00 p.m. for lunch.

Please note that for the last three years we were thankful to be able to operate at no cost due to grant funding. Unfortunately, that was post COVID funding that is no longer available.

Some families have received an email from Mrs. Kennedy noting that their child was recommended by their teachers to attend. We highly encourage these families to enroll their students early to ensure a spot!



GreatHearts® SummerCamp

CLASSICAL EDUCATION. REVOLUTIONARY SCHOOLS.™ GREAT CAMPS FOR GREAT HEARTS.

Discover our traditional camp experience with a classical twist!



June 2nd-27th, 2025

Monday-Friday | 12:00 PM-6:00 PM

\$100/week

Includes a t-shirt.

For all students entering Grades K-5 in Fall '25, including those on a Great Hearts waitlist.

Early Bird Special

Save \$5 per week, per child before May 1st.

Exciting Weekly Themes!

- 1 Exploration Station**
Adventure awaits at Exploration Station! From the Arctic to rainforests and every habitat in between, discover how life thrives in diverse and extreme environments.
- 2 DIY Maker's Workshop**
Spark your child's creativity with DIY Maker's Workshop! A week of fun crafting, making, and DIY projects awaits.
- 3 Time Trekkers**
Travel through time with Time Trekkers! Explore Prehistoric times, the Middle Ages, the Roaring 20s, and even the future with engaging, hands-on activities!
- 4 Circus Spectacular**
Step right up to Circus Spectacular! A week of fun awaits as campers explore the vibrant world of the circus.



Register: MaryvalePrep.org/summer
Contact us: Programs@GreatHearts.org | 602.396.7574



BARÇA Academy

BARÇA ACADEMY CAMPS ARE BACK IN PHOENIX!

We're excited to announce our Summer Camp!

When: June 9-13, 8 AM to 2 PM.

Where: Scottsdale Sports Complex, Phoenix.

Led by top Barça coaches, this is a unique chance to learn the FC Barcelona methodology. Plus, players could be selected for an unforgettable trip to Barcelona! We also have a special offer only for you:

- Great Hearts Students: Use code GH25SOCCER for \$50 off.
- Register before March 31st to get an extra \$50 off with our Final Early Bird price.

Sign up here:

<https://barcaresidencyacademyusa.com/summer-camp-phoenix/>

Have questions? Reach out on Instagram or Facebook @barcaacademyphx or email us at soccer@katapult.es

SUN & FUN
Summer

STUDENT DROPOFF

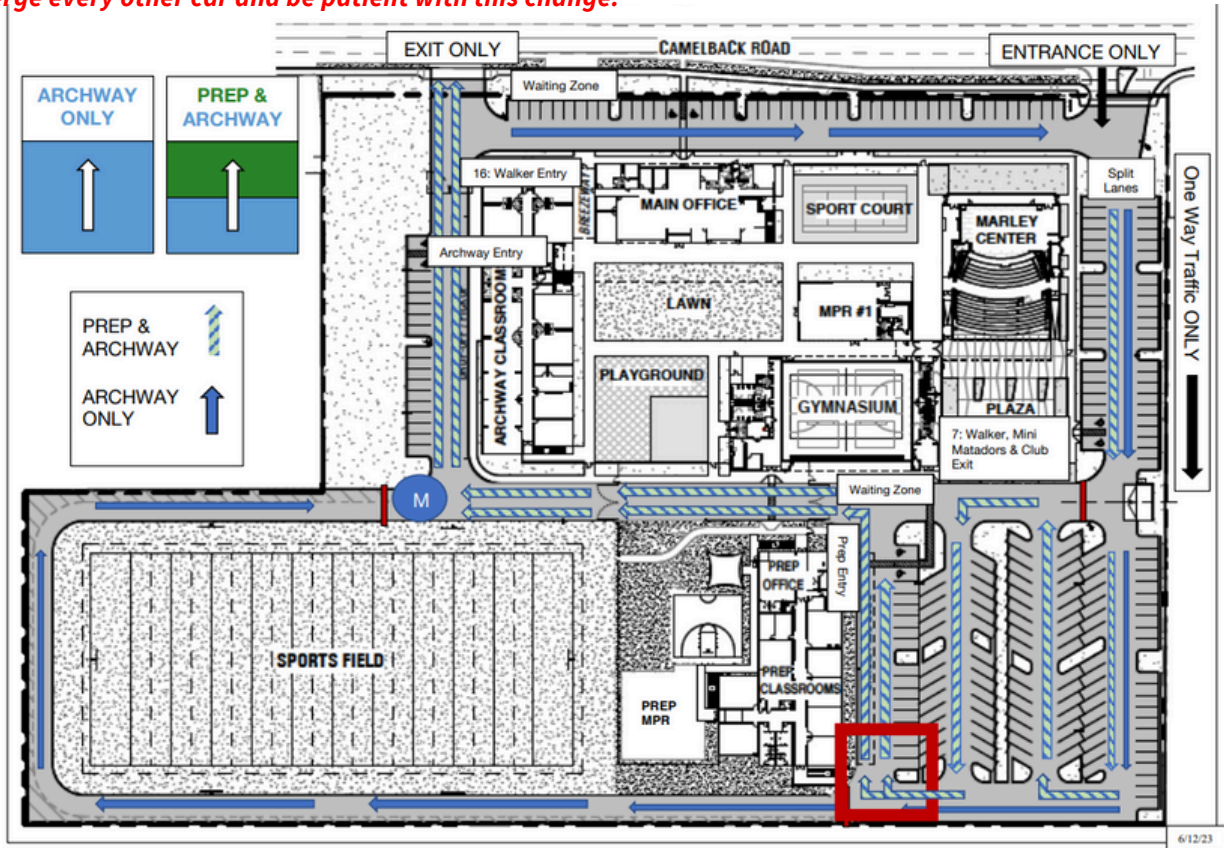
Students should not be dropped off on the side of Camelback Road near or by the campus. This is extremely unsafe and does not follow our student drop off guidelines. The drop-off guideline is to use carline to safely drop off students or park near the school property and walk to school using the sidewalk. Please refer to our family handbook listed in our website for additional information on our guidelines.

CARLINE PICKUP

- The earliest you can enter into carline is 2:30pm on Full Days and at 12:15pm on Early Release Days. This will allow our students & faculty to have a cleared parking lot in the event EMS needs access.
- Have your placard ready for scanning; roll down your window when approaching a staff member that can scan your placard, they will not scan if window is up as this causes delays with window barrier.
- Please keep the East Entrance merge point cleared at all times. Wait to enter until all traffic is cleared.
- Maintain safe parking lot speed of 5 mph.
- Merge point will utilize a zipper merge (1 car per lane).
- The use of cell phones while on carline has slowed us down, and its ultimately unsafe.
- DO NOT record or take pictures of students outside your family.



The PREP ONLY lane (adjacent to the Prep Building) is now open to both Archway & Prep vehicles. This will help cars move quicker since many of our Prep students are walkers or athletes. A faculty member will be outside of Gate 10 directing vehicles into both lanes. Vehicles will be checked into the A/B or right side lane and Archway students will be stationed on the sidewalk on the Archway west side. Archway vehicles need to stay right to collect their student(s) from the correct side. STAY RIGHT if Archway, merge every other car and be patient with this change.



HANDICAP PARKING SPACES

Do not park in a handicap parking space if you or your passenger do not hold a permit. Parking in a handicap spot without the proper authorization is in violation of [ARS 28-884](#). Even if you are in a rush or your visit to the office will take a few minutes, these spots are reserved for our students, parents and visitors with a disability. Violations should be reported

CAMPUS SAFETY

Our campus is equipped with security gates that are armed and required to be closed at all times. These gates are for both vehicles and pedestrians. Access is limited to our Front Office only and we ask that all visits are conducted through these doors and at no times should pedestrian gates be used to exit campus. To ensure carline efficiency and safety, please plan to exit campus with Right Turns only. Camelback Road is very dangerous when making left turns.

Students are allowed onto campus at 7am and all of entrance gates will be opened at this time. Student walkers should adjust their time on campus to reflect the timing of the campus gate openings.

SCHOOL POLICIES

ATTENDANCE

A student that is absent more than ten percent (18 days) of the required number of school days per year is considered to have "excessive absences" whether the absence is excused or unexcused.

This year, we are introducing CUTS LITE Service (Court Unified Truancy Suppression Limited Intervention To Educate). We will follow the following timeline:

- 5 Absences: You will receive the 1st warning letter
- CUTS Lite Conference
- 9-11 Absences: 2nd warning letter
- CUTS Hearing
- Parent Conference/School Intervention



TARDIES

Any student here beyond 7:57 a.m. is considered tardy and **must be signed in by a parent in the front office**. Please avoid any consequences for multiple tardies by arriving on time.

EARLY STUDENT PICK UP

Students who need to be picked up early for appointments must be picked up in the main office **no later than 2:45pm on full days and 12:30pm on half days, NO EXCEPTIONS**. The current Placard with student's name or a valid identification with photo is required when picking up through the office. The student must be signed out with a reason for leaving.

PLACARD FOR CARLINE PICK UP

Placards can be accessed on the Parent Portal at <https://greathearts.schoolaxis.com/> Log in, on main page PICK UP PLACARDS, Select Maryvale Prep Academy, Download and Print, if you cannot locate the placard on your Parent Portal Account, please contact the Front Office. Please note, we will not accept phone images of the placard for student pick up, parents must have the current paper copy of the placard for safety and fast process.

LATE PICK UP

Students picked up after 3:45pm (1:30pm early release), will incur late pick up fees beginning with the second occurrence of late pick-up, families will be assessed a late pick-up fee according to the following fee schedule:

- Up until 4:00pm (1:30 pm early release) = \$5.00 per student
- 4:01 – 4:30pm (1:46-2:15pm early release) = \$5.00 per student + \$1.00 per student, per minute
- After 4:30pm (2:15pm early release) = same fee structure as above + Department of Child Safety phone call

STUDENT WALKERS

If you would like to add your child to the walker list, you will need to do so at least 12 hours in advance of when you want them to begin walking. If you do not receive confirmation, they have not been added and will have to wait until then to be dismissed as walkers. Please note, once on the walker list they must walk daily until they are removed. If you want your child to be on the walker list, please email enrollment@maryvaleprep.org. The same applies if you want them removed. Parents meeting their student walkers must park off campus.

1. Walkers will be dismissed at 12:50 pm on early release days and at 3:20 pm on full days from Gates 6 and 7.
2. On full days, Prep students can wait for their Archway siblings until they are released at 3:20 pm and they can head out to Gate 4 to walk home or meet families together.
3. On Early Release Days, Archway students can wait for their Prep siblings until they are released at 1:00 pm and they can head out to Gate 4 to walk home or meet families together.
4. Students not waiting for siblings as noted, must exit campus immediately.
5. Kindergarten students without 1st through 12th grade siblings must be met by their parent/guardian or authorized pick up personnel right outside of Gate 4.

Students will walk along the sidewalk adjacent to the Marley Center and out Gate 4 to meet their parents. Please refrain from walking through Gate 4 onto campus or crowding up that area to ensure the flow of traffic continues and students do not get lost amongst waiting families.

Please note that signing your child up as a walker is a liability you are taking as they are not supervised or delivered directly to parents. We ask that as parents, you calculate the best option for your family as you consider safety and convenience. Student walkers will be allowed to take their phones out to connect with parents/guardians once they have exited Gates 6 and 7.

DISMISSAL

Due to our school day in sessions and safety precautions arrival for end of day pick up will not begin until 2:30 pm. If you arrive prior to that, please note that you will be asked to exit campus and return after 2:30 pm. Emergency and office business vehicles cannot get onto campus if the school is blocked with waiters.

SCHOOL HOURS

Regular Days:
8:00 AM - 3:15 PM
(campus opens at 7AM)

Early Release Days:
8:00 AM - 12:45 PM
(campus opens at 7AM)

Main Office Phone Number: (623) 247-6095
Attendance Line: (623) 247-6095 Option 0
(leave a detailed voicemail to report absences)

Attendance Email:
attendance@maryvaleprep.org

www.maryvaleprep.org



OFFICE HOURS

Regular School Days:
7:00 AM - 4:00 PM

Early Release Days:
7:00 AM - 1:30 PM